

FULTON MARKET PLUG AND PLAY LOFT OFFICE TECH SPACE WITH PARKING AVAILABLE FOR LEASE



Features:

- Elevator/Doorman building with up to 20 parking spaces.
- Farpoint Development's current office space.
- Located on the corner of Randolph and Racine, 2 blocks from the McDonald's headquarters.
- Short-term leases available up to 5 years.
- 24/7 On-Site Security.

Space Available: 10,654 SF

Divisible to: 5,903 SF & 4,751 SF

Lease Rate: \$37.50 MG

Utilities included



ADAM SCHNEIDERMAN, SIOR

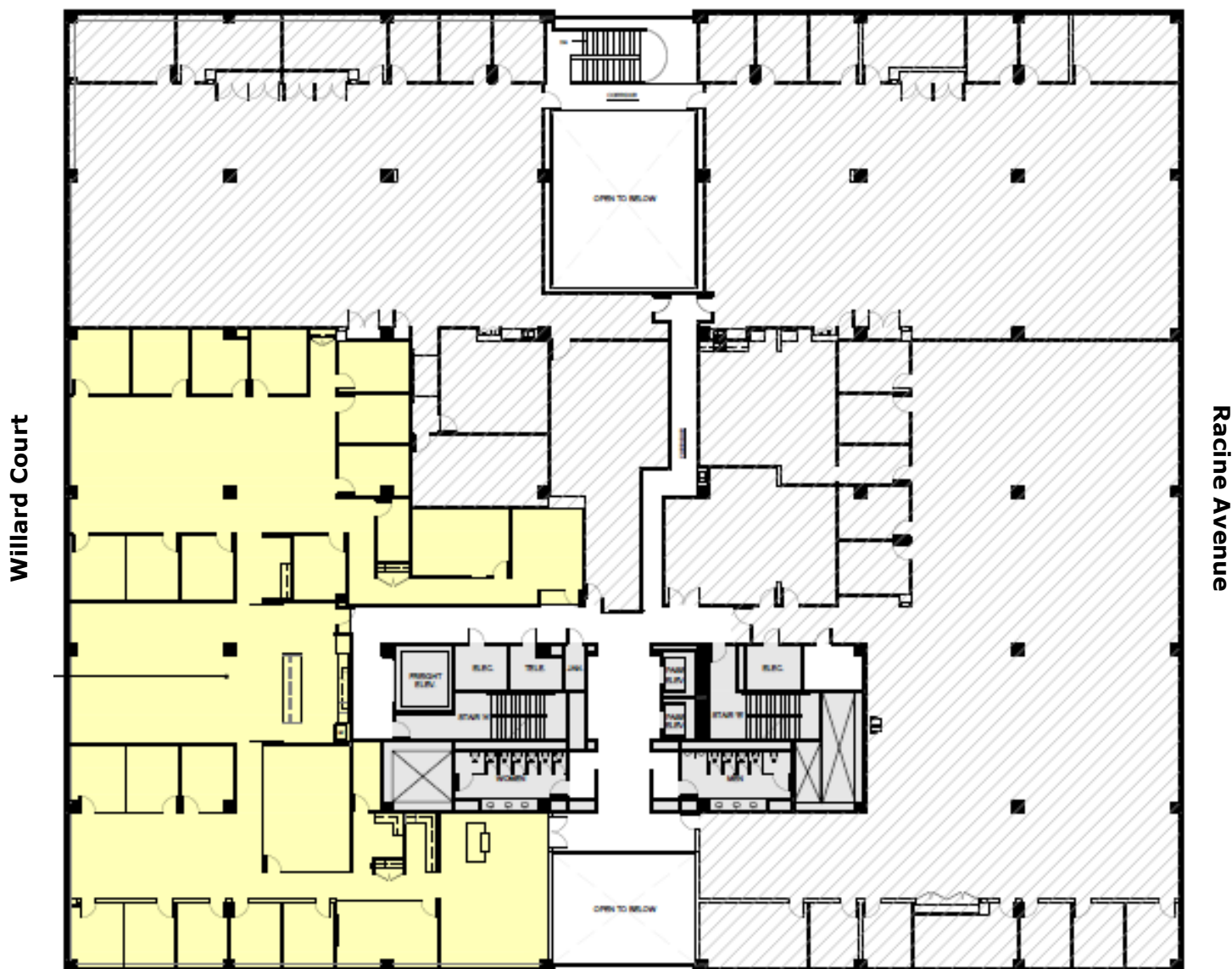
847-826-4467

ADAM@STRAUSSREALTY.COM

STRAUSS REALTY, LTD.
4220 W. MONTROSE AVENUE
CHICAGO, ILLINOIS 60641
PHONE: 773-736-3600

**FULTON MARKET PLUG AND PLAY LOFT OFFICE
TECH SPACE WITH PARKING AVAILABLE FOR LEASE**

Randolph Street



ADAM SCHNEIDERMAN, SIOR

847-826-4467

ADAM@STRAUSSREALTY.COM

STRAUSS REALTY, LTD.
4220 W. MONTROSE AVENUE
CHICAGO, ILLINOIS 60641
PHONE: 773-736-3600

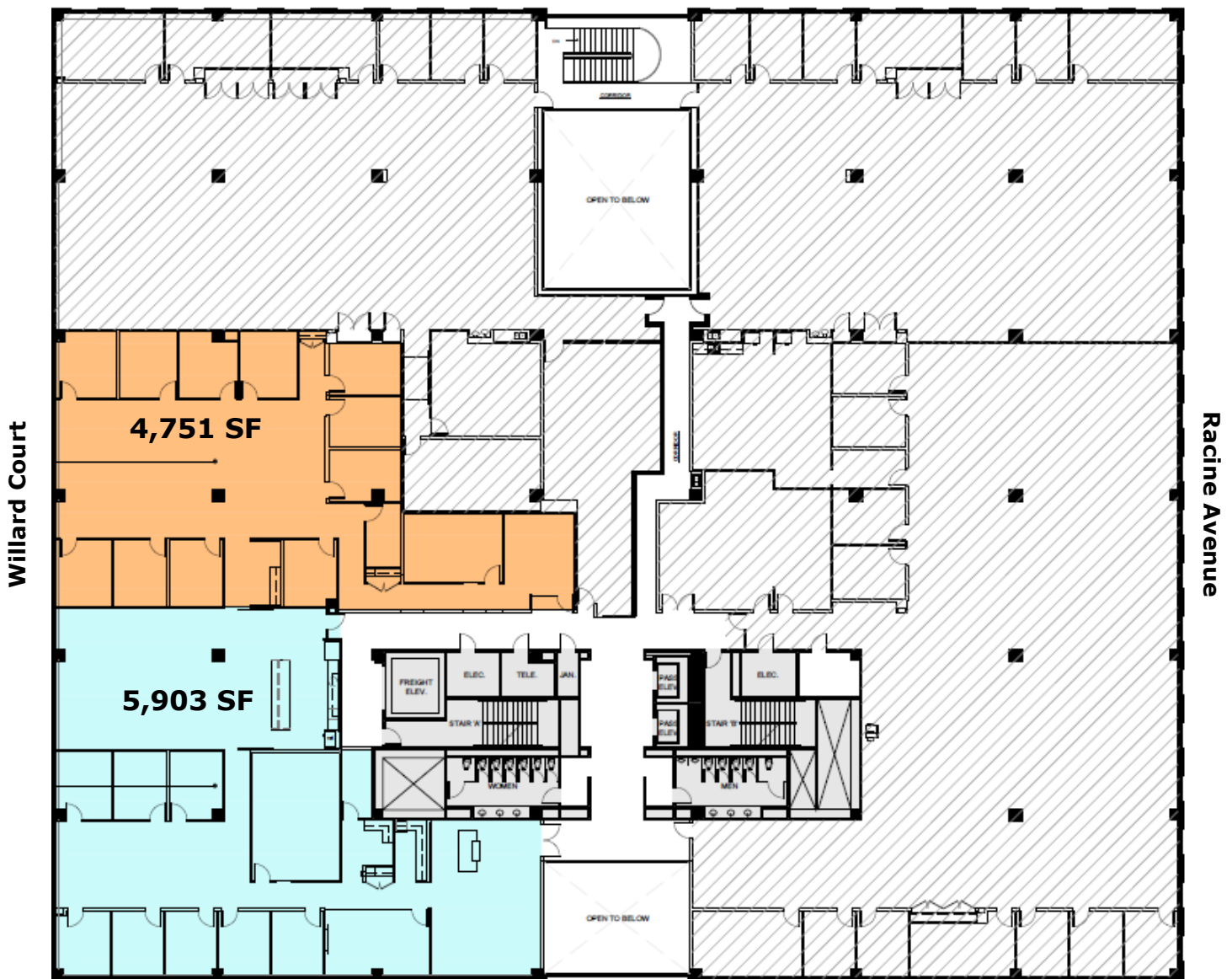
STRAUSS

REALTY, LTD.

120 N. RACINE AVE
CHICAGO, IL 60607

FULTON MARKET PLUG AND PLAY LOFT OFFICE TECH SPACE WITH PARKING AVAILABLE FOR LEASE

Randolph Street



ADAM SCHNEIDERMAN, SIOR

847-826-4467

ADAM@STRAUSSREALTY.COM

STRAUSS REALTY, LTD.
4220 W. MONTROSE AVENUE
CHICAGO, ILLINOIS 60641
PHONE: 773-736-3600

This flyer was produced using data from private and government sources deemed reliable. The information herein is provided without representation.

STRAUSS

REALTY, LTD.

120 N. RACINE AVE
CHICAGO, IL 60607

Amenities and Transportation Map



ADAM SCHNEIDERMAN, SIOR

847-826-4467

ADAM@STRAUSSREALTY.COM

STRAUSS REALTY, LTD.

4220 W. MONTROSE AVENUE

CHICAGO, ILLINOIS 60641

PHONE: 773-736-3600

This flyer was produced using data from private and government sources deemed reliable. The information herein is provided without representation.